



Apartment (EPC Rating: )

2, 13 PARK ROAD, KINGSTON, SURREY,  
KT2 6BX

PCM

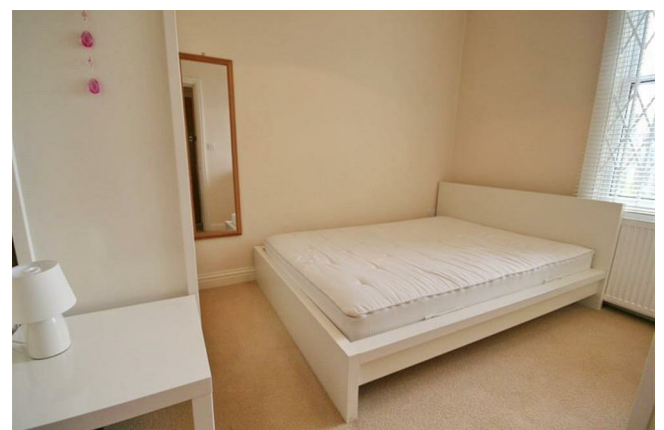
**£1,750 PCM**



# 3 Bedroom Apartment located in Surrey

Saxon Kings are pleased to present this stunning 3 bedroom apartment. Located within walking distance to Richmond Park & Norbiton station. The property is offered furnished and is finished to a high standard throughout with a modern kitchen. Other benefits include wood flooring and a private balcony. Council tax band D, minimum 12 month tenancy term. Deposit: £2019.






SAXON KINGS LETTINGS | 135 KINGS ROAD, KINGSTON UPON THAMES, SURREY, KT2 5JE

Council Tax Band

Energy Performance Graph

Energy Efficiency Rating		
	Current	Potential
<i>Very energy efficient - lower running costs</i>		
(92 plus) <b>A</b>		
(81-91) <b>B</b>		
(69-80) <b>C</b>		
(55-68) <b>D</b>		
(39-54) <b>E</b>		
(21-38) <b>F</b>		
(1-20) <b>G</b>		
<i>Not energy efficient - higher running costs</i>		
<b>England &amp; Wales</b>	EU Directive 2002/91/EC	

Call us on

**020 8330 1777**

**info@saxonkings.co.uk**

**www.saxonkings.co.uk**

Agents Note: Whilst every care has been taken to prepare these particulars, they are for guidance purposes only. All measurements are approximate and are for general guidance purposes only and whilst every care has been taken to ensure their accuracy, they should not be relied upon and potential buyers are advised to recheck the measurements.

