

LEASEHOLD



Apartment (EPC Rating: D)

KINGSTON HILL SURREY KT2 7PW

Asking Price

£300,000



**SAXON
KINGS**



1



1



1

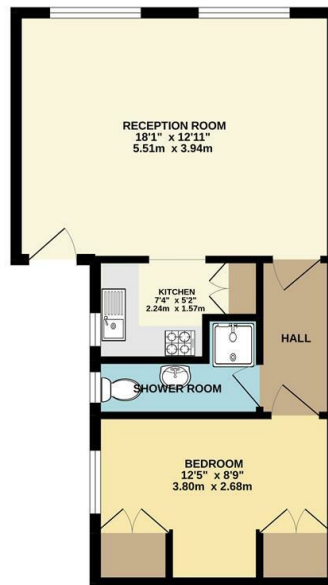


D

1 Bedroom Apartment located in Surrey

Saxon Kings welcomes to the market a rarely available GARDEN conversion flat! One large double bedroom, shower room, spacious lounge and modern fitted kitchen. Located within walking distance of Richmond Park, Kingston Hospital & Norbiton BR. Features include private garden and entrance. Lease being renewed currently to 99 years. Council tax C. Service charge £814p/a.

GROUND FLOOR
426 sq.ft. (39.6 sq.m.) approx.

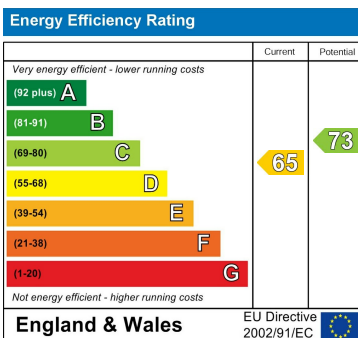


TOTAL FLOOR AREA: 426 sq.ft. (39.6 sq.m.) approx.
Whilst every attempt has been made to ensure the accuracy of the floorplan contained herein, measurements of doors, windows, rooms and any other items are approximate and no responsibility is taken for any error, omission or mis-statement. This plan is for illustrative purposes only and should be used as such by any prospective purchaser. The services, systems and appliances shown have not been tested and no guarantee is given to their quality or reliability can be given.
Made with Metropix i2002

Council Tax Band

C

Energy Performance Graph



Call us on

020 8546 7771

info@saxonkings.co.uk

www.saxonkings.co.uk

Agents Note: Whilst every care has been taken to prepare these particulars, they are for guidance purposes only. All measurements are approximate and are for general guidance purposes only and whilst every care has been taken to ensure their accuracy, they should not be relied upon and potential buyers are advised to recheck the measurements.