

LEASEHOLD



Apartment (EPC Rating: B)

THE GRANGE LONDON SE1 3GU

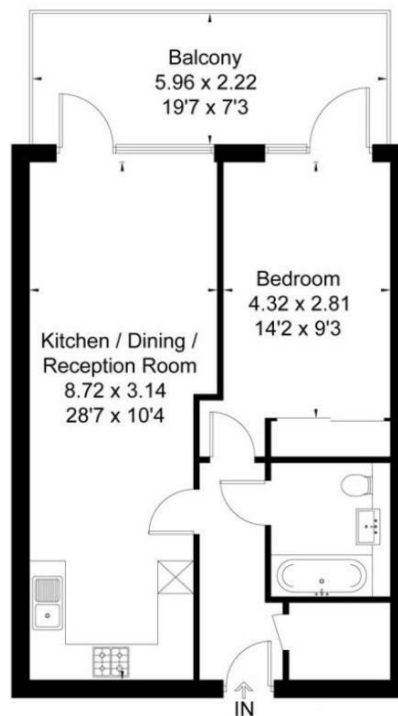
Asking Price

£524,950



1 Bedroom Apartment located in London

Offered with no onward chain, this impeccably designed, high specification one bedroom apartment is situated just a few minutes walk from Bermondsey Street with its eclectic mix of cafes, restaurants, gastro pubs and cocktail bars. This apartment offers access to excellent transport links including Bermondsey tube (Jubilee line), Borough tube (Northern line), London Bridge station and many bus routes. Just a couple of tube stops or a short stroll into the City this really is the ideal location for that perfect work / life balance. The apartment is very well presented throughout and benefits from a spacious south facing balcony offering fantastic views of the Shard and the City skyline. Further benefits include underfloor heating throughout and large windows offering bright accommodation and further enhancing the view. This gated development is pet friendly, boasts a 24 hour concierge and beautifully maintained communal gardens. This really is Central London living at its best.



Council Tax Band

D

Energy Performance Graph

Energy Efficiency Rating		Current	Potential
Very energy efficient - lower running costs			
(92 plus) A		87	87
(81-91) B			
(69-80) C			
(55-68) D			
(39-54) E			
(21-38) F			
(1-20) G			
Not energy efficient - higher running costs			
England & Wales	EU Directive 2002/91/EC		

Call us on

020 8546 7771

info@saxonkings.co.uk

www.saxonkings.co.uk

Agents Note: Whilst every care has been taken to prepare these particulars, they are for guidance purposes only. All measurements are approximate and are for general guidance purposes only and whilst every care has been taken to ensure their accuracy, they should not be relied upon and potential buyers are advised to recheck the measurements.