

LEASEHOLD



Apartment (EPC Rating: C)

# PARK ROAD KINGSTON KT2 6DQ

Asking Price

# £375,000



SAXON  
KINGS



2



1



1



C

# 2 Bedroom Apartment located in Kingston

A well presented split level maisonette with its own entrance. Perfectly located just half a mile from Norbiton station and a short walk from Richmond Park, Kingston Hospital & local amenities (including a Co-Op and schools). Accommodation comprises two double bedrooms, one reception room, separate modern kitchen, bathroom and additional W.C. Permit parking available. 118 years remaining on the lease, £100p/a Ground Rent, no service charge.

Approximate Gross Internal Area = 76 sq m / 818 sq ft

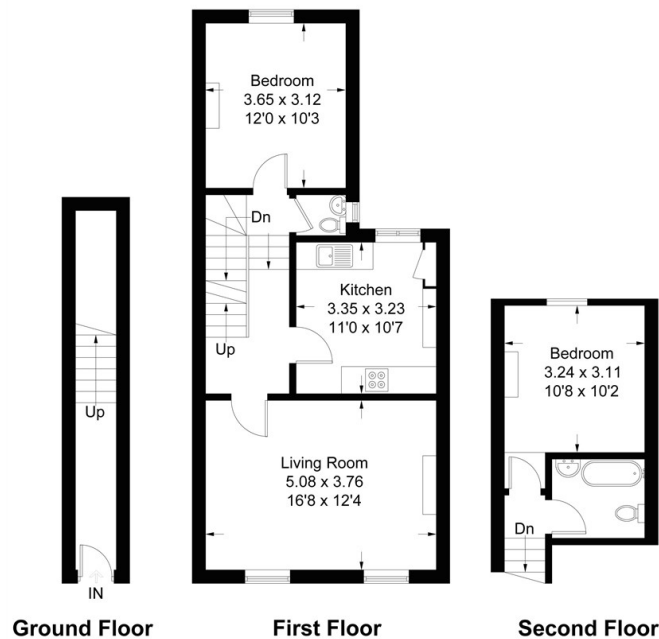


Illustration for identification purposes only, measurements are approximate, not to scale. FloorplansUsketch.com © 2016 (ID246840)

Council Tax Band

D

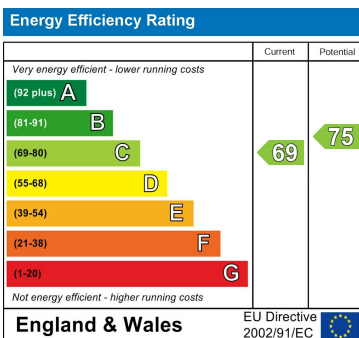
Energy Performance Graph

Call us on

020 8330 1777

info@saxonkings.co.uk

www.saxonkings.co.uk



Agents Note: Whilst every care has been taken to prepare these particulars, they are for guidance purposes only. All measurements are approximate and are for general guidance purposes only and whilst every care has been taken to ensure their accuracy, they should not be relied upon and potential buyers are advised to recheck the measurements.

