

LEASEHOLD - SHARE OF



Apartment (EPC Rating: D)

LOVELACE ROAD SURBITON KT6 6NJ

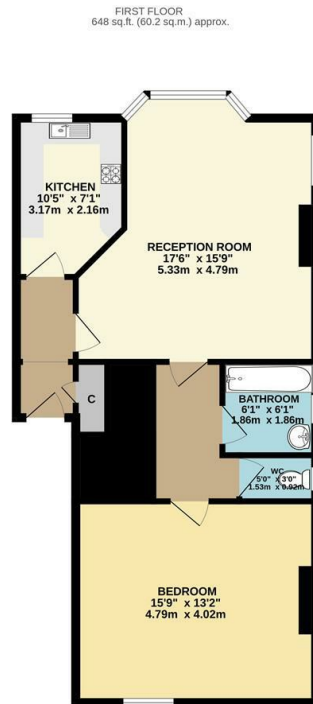
Asking Price

£350,000



1 Bedroom Apartment located in Surbiton

A one double bedroom character conversion apartment located within walking distance of Surbiton Station and High Street. The accommodation comprises a large bedroom, spacious lounge/diner, separate fitted kitchen, bathroom with shower over bath, separate WC. Plenty of Storage! Great location! Share of freehold, EPC rating D, council tax band C.

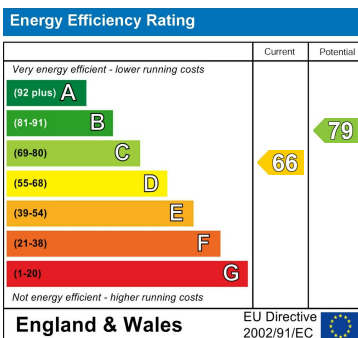


TOTAL FLOOR AREA: 648 sq.ft. (60.2 sq.m.) approx.
Whilst every attempt has been made to ensure the accuracy of the floorplan contained herein, measurements of doors, windows, rooms and any other items are approximate and no responsibility is taken for any error, omission or mis-statement. This plan is for illustrative purposes only and should be used as such by any prospective purchaser. The services, systems and appliances shown have not been tested and no guarantee is given to their quality or reliability can be given.
Made with Metropix i2022

Council Tax Band

C

Energy Performance Graph



Call us on

020 8546 7771

info@saxonkings.co.uk

www.saxonkings.co.uk

Agents Note: Whilst every care has been taken to prepare these particulars, they are for guidance purposes only. All measurements are approximate and are for general guidance purposes only and whilst every care has been taken to ensure their accuracy, they should not be relied upon and potential buyers are advised to recheck the measurements.