

FREEHOLD



House - End Terrace (EPC Rating: D)

**RONELEAN ROAD SURREY KT6 7LL**

Asking Price

**£490,000**

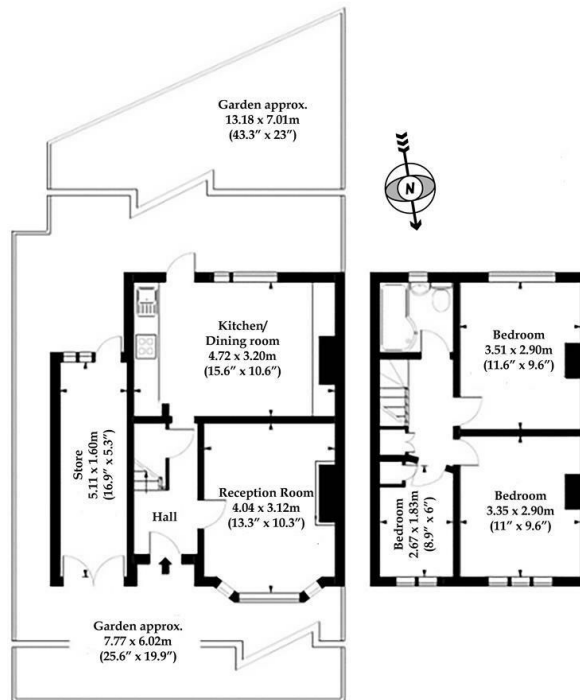


# 3 Bedroom House - End Terrace located in Surrey

Saxon Kings welcome to the market this end terraced, 3 bedroom house.

The house is conveniently located for excellent schools, local amenities and transport links.

Accommodation comprises three bedrooms, bathroom with shower over bath, lounge, fitted kitchen/diner, private rear garden, shed & off street parking for 2 cars.



Approx. Gross Internal Area  
75.99Sqm - 818 SqFt

Whilst every attempt has been made to ensure the accuracy of the floor plan contained here, measurements of doors, windows, rooms and any other items are approximate and no responsibility is taken for any error, omission or mis-statement. This plan is for illustrative purposes only and should be used as such by any prospective purchaser.

Council Tax Band

D

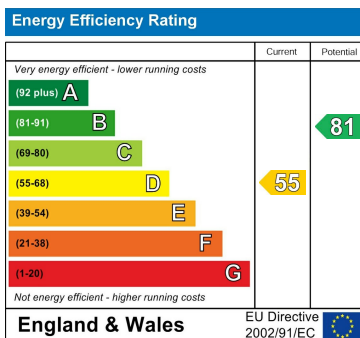
Energy Performance Graph

Call us on

020 8546 7771

info@saxonkings.co.uk

www.saxonkings.co.uk



Agents Note: Whilst every care has been taken to prepare these particulars, they are for guidance purposes only. All measurements are approximate and are for general guidance purposes only and whilst every care has been taken to ensure their accuracy, they should not be relied upon and potential buyers are advised to recheck the measurements.

