



Not specified

PARK ROAD, KINGSTON KT2 5LS

PCM

£2,900 PCM

FEATURES

- Four bedrooms
- Latchmere School nearby
- Two bathrooms
- Modern Kitchen
- Bungalow
- St Agatha's School nearby
- Off street parking



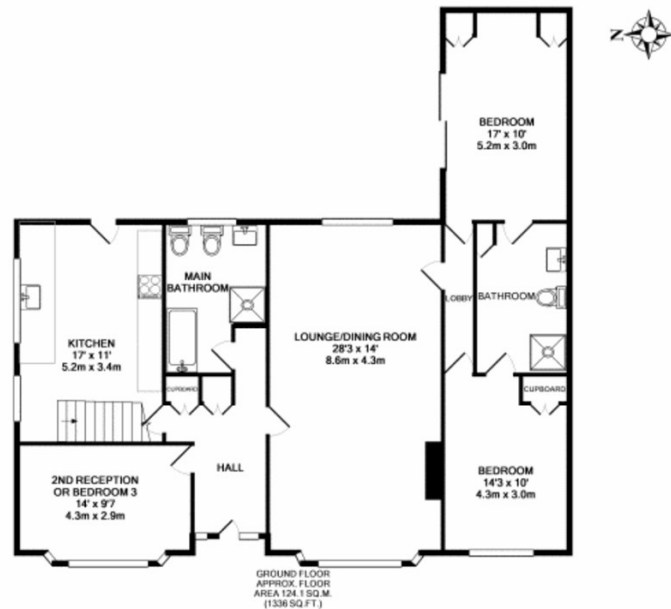
4 Bedroom Not specified located in Kingston

A large detached bungalow located in North Kingston, close to St Agatha's & Latchmere School. Featuring stunning en-suite to bedroom, three further bedrooms, additional family bathroom, large living room, modern kitchen/diner and private rear garden. Off street parking. 12 month term, CTAX band F. Deposit: £31115. Holding fee £623.

Call us on
020 8330 1777

info@saxonkings.co.uk
www.saxonkings.co.uk

Council Tax Band
F



TOTAL APPROX. FLOOR AREA 149.8 SQ.M. (1613 SQ.FT.)
Whilst every attempt has been made to ensure the accuracy of the floor plan contained here, measurements of doors, windows, rooms and any other items are approximate and no responsibility is taken for any error, omission, or mis-statement. This plan is for illustrative purposes only and should be used as such by any prospective purchaser. The services, systems and appliances shown have not been tested and no guarantee as to their operability or efficiency can be given.
Made with Metropix ©2008

Energy Efficiency Rating		Current	Potential
<i>Very energy efficient - lower running costs</i>			
(92 plus)	A		
(81-91)	B		
(69-80)	C		68
(55-68)	D		
(39-54)	E	43	
(21-38)	F		
(1-20)	G		
<i>Not energy efficient - higher running costs</i>			
England & Wales		EU Directive 2002/91/EC	

Agents Note: Whilst every care has been taken to prepare these particulars, they are for guidance purposes only. All measurements are approximate and are for general guidance purposes only and whilst every care has been taken to ensure their accuracy, they should not be relied upon and potential buyers are advised to recheck the measurements.

