

LEASEHOLD - SHARE OF
FREEHOLD



Apartment

48 PORTSMOUTH
ROAD, SURBITON
KT6 4JA

Asking Price

£695,000

FEATURES



2 Bedroom Apartment located in Surbiton

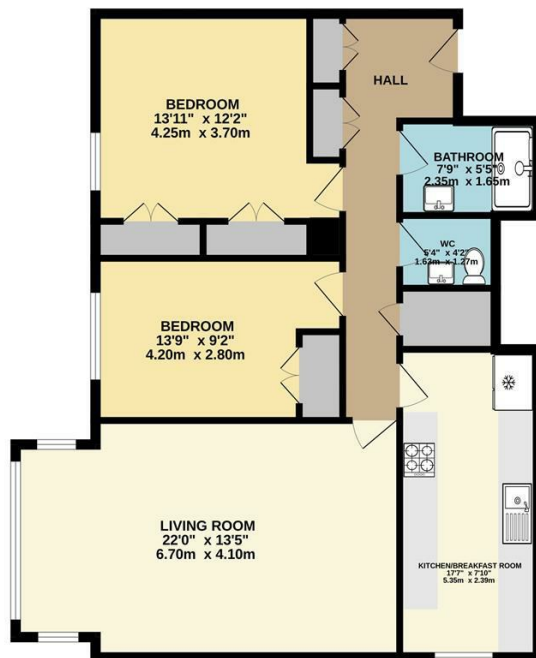
A beautifully presented two double bedroom top floor apartment with incredible views of the River Thames and Home Park. Offered with no onward chain this spacious apartment benefits from secure allocated parking, two lifts and plenty of built in storage. The apartment comprises entrance hallway with two storage cupboards, two double bedrooms, both with built in wardrobes, reception room with bay window, a modern shower room, additional WC and a stunning kitchen / breakfast room. Lease remaining 866 Years. Service / Maintenance Charge : £3000 P/A

Call us on
020 8546 7771

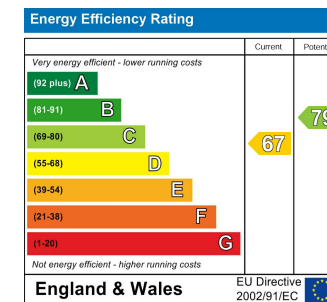
info@saxonkings.co.uk
www.saxonkings.co.uk

Council Tax Band
F

FIFTH FLOOR (TOP)
927 sq.ft. (86.2 sq.m.) approx.



TOTAL FLOOR AREA : 927 sq.ft. (86.2 sq.m.) approx.
Whilst every attempt has been made to ensure the accuracy of the floorplan contained here, measurements of doors, windows, rooms and any other items are approximate and no responsibility is taken for any error, omission or mis-statement. This plan is for illustrative purposes only and should be used as such by any prospective purchaser. The services, systems and appliances shown have not been tested and no guarantee as to their operability or efficiency can be given.
Made with Metropix C2023



Agents Note: Whilst every care has been taken to prepare these particulars, they are for guidance purposes only. All measurements are approximate and are for general guidance purposes only and whilst every care has been taken to ensure their accuracy, they should not be relied upon and potential buyers are advised to recheck the measurements.

