

Apartment

# ST GEORGES ROAD, LONDON SE1 6ET

PCM

# £1,750 PCM

## FEATURES

- Private courtyard garden
- One double bedroom
- Character conversion
- Ideal work from home layout
- Great location close to amenities
- 45 Square metres



# 1 Bedroom Apartment located in London

Great size ONE double bedroom flat with a private courtyard!

With plenty of character features this trendy ONE bedroom flat is perfect if you want a work/life balance due to the layout. Shower over bath, fitted kitchen and separate lounge/diner. Walk to Elephant & Castle tube and local shops! Council tax band C, minimum tenancy term 6 months. Deposit: £2019 (of which £403 is the holding fee).

Call us on

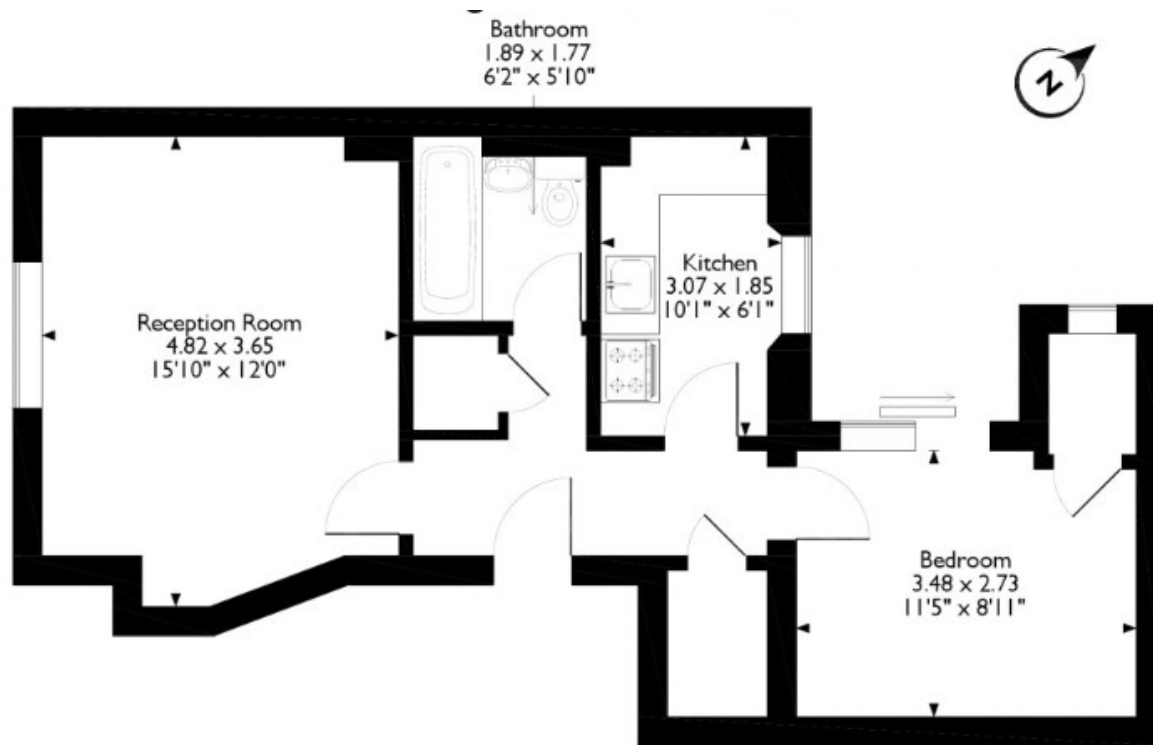
020 8330 1777

info@saxonkings.co.uk

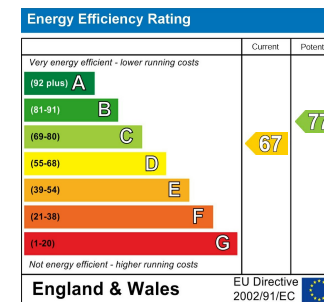
www.saxonkings.co.uk

Council Tax Band

C



Ground Floor



Agents Note: Whilst every care has been taken to prepare these particulars, they are for guidance purposes only. All measurements are approximate and are for general guidance purposes only and whilst every care has been taken to ensure their accuracy, they should not be relied upon and potential buyers are advised to recheck the measurements.

Please note that the location of doors, windows and other items are approximate and this floorplan is to be used for illustrative purposes only. Unauthorized reproduction is prohibited.

