

LEASEHOLD



Maisonette

COOMBE ROAD, KINGSTON UPON THAMES KT2 7AB

Asking Price

£575,000

FEATURES



2 Bedroom Maisonette located in Kingston Upon Thames

COMING SOON... An exciting opportunity to secure a brand new two bedroom duplex apartment.

If you're looking for a new home or an investment opportunity boasting high specification and energy efficiency, this exclusive development will provide all the comforts of contemporary living in a location as attractive as it is convenient.

Just a short stroll to Norbiton station on the edge of Kingston Upon Thames, the town centre, Richmond Park the beautiful River Thames are all close by. Offering its own entrance, split level accommodation and private outside space this is an opportunity not to be missed, all with the peace of mind of a 10 year warranty.

Call us on

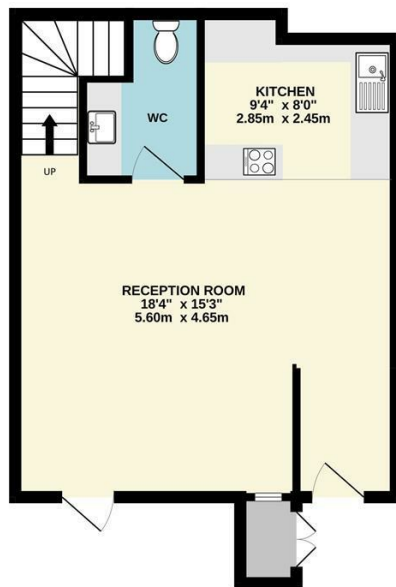
020 8546 7771

info@saxonkings.co.uk

www.saxonkings.co.uk

Council Tax Band

GROUND FLOOR
433 sq.ft. (40.2 sq.m.) approx.



1ST FLOOR
419 sq.ft. (38.9 sq.m.) approx.



TOTAL FLOOR AREA: 852 sq.ft. (79.2 sq.m.) approx.

Whilst every attempt has been made to ensure the accuracy of the floorplan contained here, measurements of doors, windows, rooms and any other items are approximate and no responsibility is taken for any error, omission or mis-statement. This plan is for illustrative purposes only and should be used as such by any prospective purchaser. The services, systems and appliances shown have not been tested and no guarantee as to their operability or efficiency can be given.
Made with Metropix ©2024

Energy Efficiency Rating		Current	Potential
<i>Very energy efficient - lower running costs</i>			
(92 plus) A			
(81-91) B			
(69-80) C			
(55-68) D			
(39-54) E			
(21-38) F			
(1-20) G			
<i>Not energy efficient - higher running costs</i>			
England & Wales		EU Directive 2002/91/EC	

Agents Note: Whilst every care has been taken to prepare these particulars, they are for guidance purposes only. All measurements are approximate and are for general guidance purposes only and whilst every care has been taken to ensure their accuracy, they should not be relied upon and potential buyers are advised to recheck the measurements.

