

LEASEHOLD



Apartment (EPC Rating: D)

# KINGSTON ROAD KINGSTON UPON THAMES KT1 3PB

Asking Price

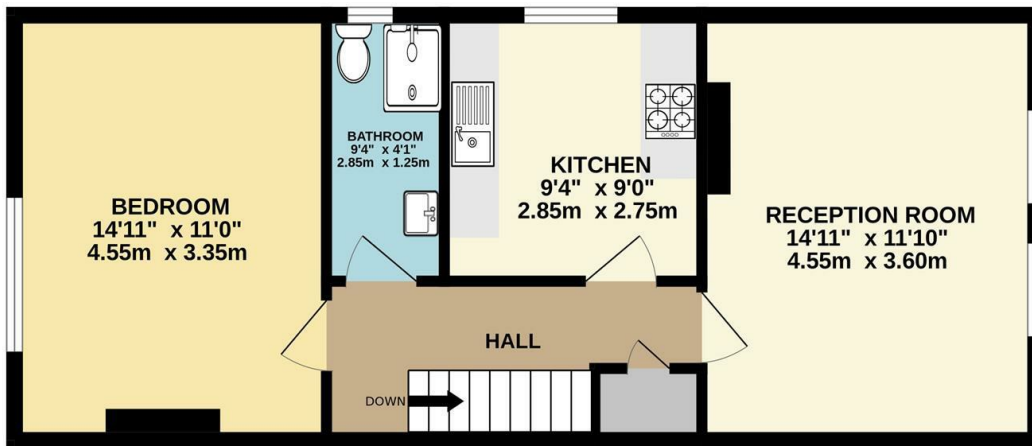
# £250,000



# 1 Bedroom Apartment located in Kingston Upon Thames

CASH BUYERS ONLY - Saxon Kings welcome to the market a beautifully presented one bedroom first floor maisonette, conveniently located between Kingston and New Malden town centres and close to Norbiton train station. Accommodation comprises modern fitted kitchen, spacious lounge, one double bedroom and a modern shower room. The property benefits from a spacious loft area which STPP offers excellent potential for any buyer. Council Tax band C, Leasehold (60 Years remaining), ground rent £100P/A, no service charge, buildings insurance £1000P/A. Further benefits include double glazing, gas central heating, a shared rear garden and off road parking to the front.

FIRST FLOOR  
538 sq.ft. (49.9 sq.m.) approx.



TOTAL FLOOR AREA : 538 sq.ft. (49.9 sq.m.) approx.

Whilst every attempt has been made to ensure the accuracy of the floorplan contained here, measurements of doors, windows, rooms and any other items are approximate and no responsibility is taken for any error, omission or mis-statement. This plan is for illustrative purposes only and should be used as such by any prospective purchaser. The services, systems and appliances shown have not been tested and no guarantee as to their operability or efficiency can be given.  
Made with Metropix 6/2024

Council Tax Band

C

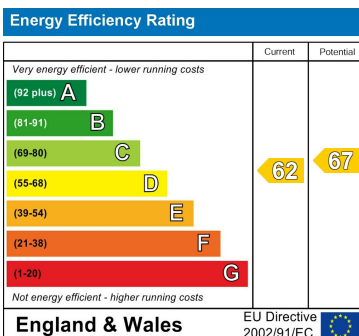
Energy Performance Graph

Call us on

020 8546 7771

info@saxonkings.co.uk

www.saxonkings.co.uk



Agents Note: Whilst every care has been taken to prepare these particulars, they are for guidance purposes only. All measurements are approximate and are for general guidance purposes only and whilst every care has been taken to ensure their accuracy, they should not be relied upon and potential buyers are advised to recheck the measurements.

