

LEASEHOLD



Apartment (EPC Rating: C)

BIRKENHEAD AVENUE KINGSTON UPON THAMES KT2 6RU

Asking Price

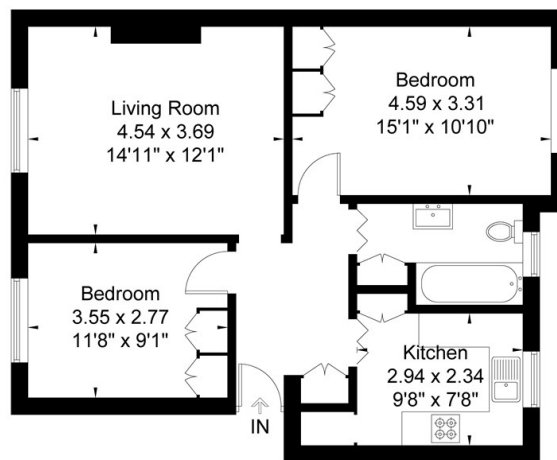
£365,000



2 Bedroom Apartment located in Kingston Upon Thames

Located in the ever popular Norbiton Hall, this spacious two bedroom apartment has just been redecorated throughout and all of the carpets are new. The location is extremely convenient, just a short walk from Kingston Hospital, town centre & Norbiton station. The apartment comprises spacious entrance hallway, modern fitted kitchen, two double bedrooms with fitted wardrobes, reception room and bathroom. The attractive development boasts well maintained communal gardens and resident parking. Leasehold (lease remaining 950 years), Service Charge £3,200 P/A, Ground Rent £0P/A.

Norbiton Hall KT2
Approximate Gross Internal Area = 62.9 sq m / 677 sq ft



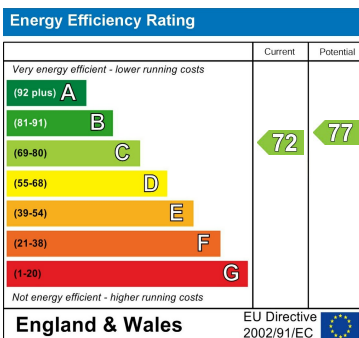
First Floor
62.9 sq m / 677 sq ft

www.epc.uk.com info@epc.uk.com
Not to scale, for guidance only and must not be relied upon as a statement of fact. All measurements and areas are approximate only and have been prepared in accordance with the current edition of RICS code of Measuring Practice.

Council Tax Band

C

Energy Performance Graph



Call us on

020 8546 7771

info@saxonkings.co.uk

www.saxonkings.co.uk

Agents Note: Whilst every care has been taken to prepare these particulars, they are for guidance purposes only. All measurements are approximate and are for general guidance purposes only and whilst every care has been taken to ensure their accuracy, they should not be relied upon and potential buyers are advised to recheck the measurements.

