



Studio

# STUDIOS, LONDON ROAD, KINGSTON KT2 6QW

PCM

# £1,200 PCM

## FEATURES

- Wifi, Water, Electricity, Council tax Included
- Extra Large Studio Room
- Great Location
- Walk to town centre
- Furnished
- 12 month term

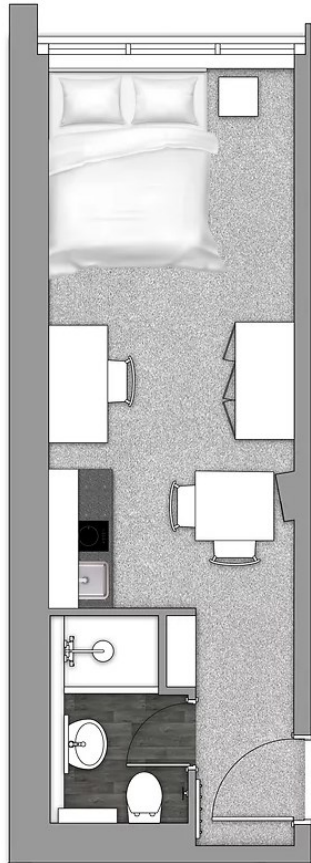


# 1 Bedroom Studio located in Kingston

ATTENTION ALL STUDENTS! A beautifully presented furnished studio apartment in a secure building ideally located for Kingston University, Kingston College & Norbiton Train Station. Wi-Fi, water, electricity and council tax included in the rent! Security Deposit £1384. Holding fee is £276 and will be deducted from the first months rent. 11 month minimum tenancy term. Shared laundry room in the building next door.

Double occupancy is available (Price on request)

Please call 0208 546 7771 to secure your viewing slot!



Call us on

020 8330 1777

[info@saxonkings.co.uk](mailto:info@saxonkings.co.uk)

[www.saxonkings.co.uk](http://www.saxonkings.co.uk)

Council Tax Band

Exempt

| Energy Efficiency Rating                           |  | Current                 | Potential |
|--|--|-------------------------|-----------|
| <i>Very energy efficient - lower running costs</i> |  |                         |           |
| (92 plus) A  |  |                         |           |
| (81-91) B  |  |                         |           |
| (69-80) C  |  | 72                      | 72        |
| (55-68) D  |  |                         |           |
| (39-54) E  |  |                         |           |
| (21-38) F  |  |                         |           |
| (1-20) G   |  |                         |           |
| <i>Not energy efficient - higher running costs</i> |  |                         |           |
| England & Wales                                    |  | EU Directive 2002/91/EC |           |

Agents Note: Whilst every care has been taken to prepare these particulars, they are for guidance purposes only. All measurements are approximate and are for general guidance purposes only and whilst every care has been taken to ensure their accuracy, they should not be relied upon and potential buyers are advised to recheck the measurements.

