

LEASEHOLD



Maisonette (EPC Rating: C)

GARRISON LANE CHESSINGTON KT9 2LB

Asking Price

£360,000

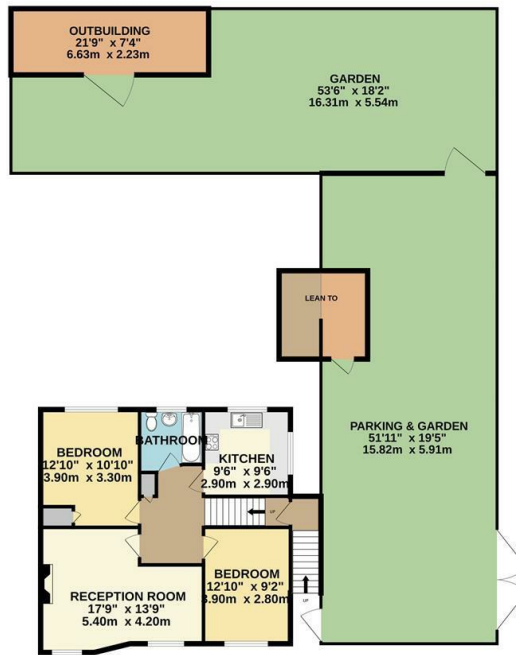


2 Bedroom Maisonette located in Chessington

Saxon Kings are excited to bring to the market this well presented two double bedroom first floor maisonette with a private garden and off road parking. Located on a large corner plot this maisonette benefits from an extra area of land and outbuilding accessed from Bransbury Road. Offering an exciting investment opportunity STPP.

Ideal for local bus routes and Chessington South Station the property comprises spacious lounge, modern fitted kitchen, bathroom and two bedrooms. All rooms are accessed from a central hallway. Lease length 100 years. Service charge £500p/a. Ground rent £10p/a.

FIRST FLOOR
1003 sq.ft. (93.2 sq.m.) approx.

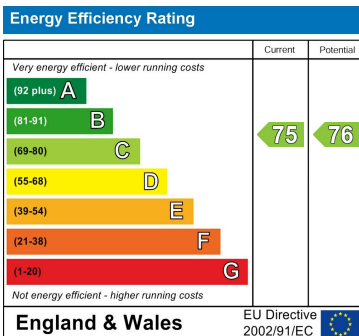


TOTAL FLOOR AREA: 1003 sq.ft. (93.2 sq.m.) approx.
Whilst every attempt has been made to ensure the accuracy of the floorplan contained here, measurements of doors, windows, rooms and any other items are approximate and no responsibility is taken for any error, omission or mis-statement. This plan is for illustrative purposes only and should be used as such by any prospective purchaser. The services, systems and appliances shown have not been tested and no guarantee as to their operation or efficiency can be given. Made with Metropix ©2024

Council Tax Band

C

Energy Performance Graph



Call us on

020 8546 7771

info@saxonkings.co.uk

www.saxonkings.co.uk

Agents Note: Whilst every care has been taken to prepare these particulars, they are for guidance purposes only. All measurements are approximate and are for general guidance purposes only and whilst every care has been taken to ensure their accuracy, they should not be relied upon and potential buyers are advised to recheck the measurements.

