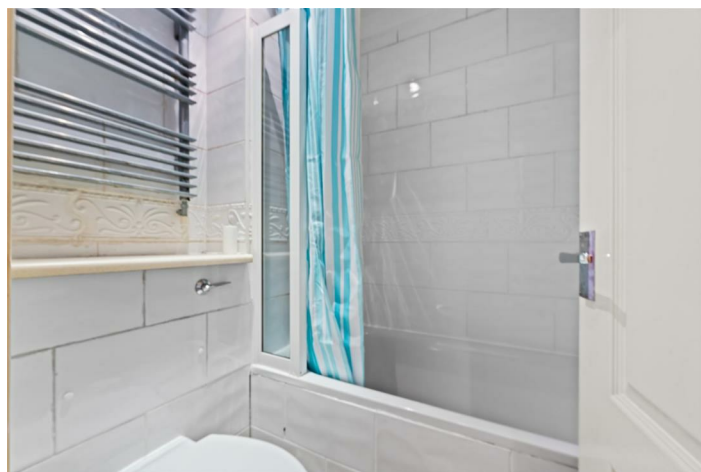
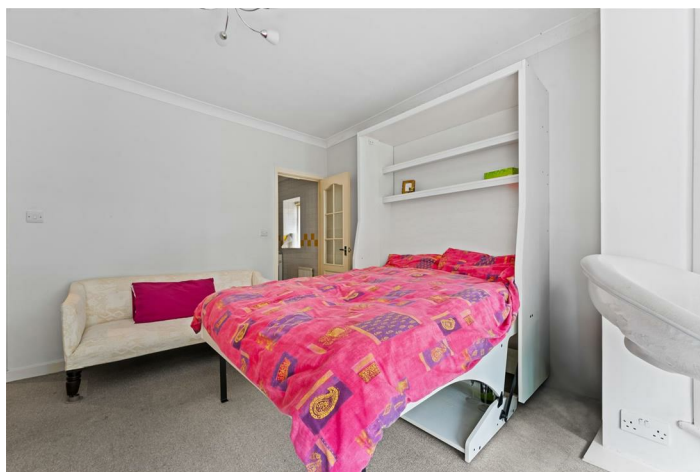


LEASEHOLD



Studio (EPC Rating: C)

**WORPLE ROAD LONDON SW19 4HZ**

Asking Price

**£249,950**



# 1 Bedroom Studio located in London

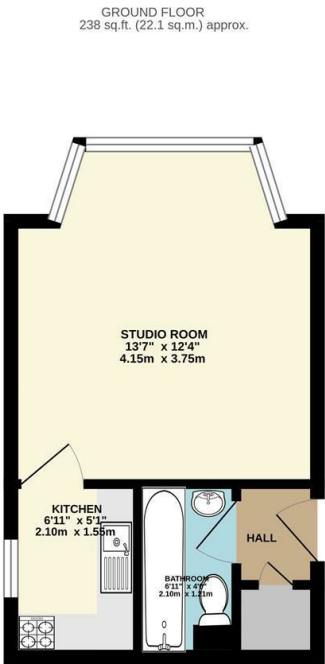
A well presented studio apartment located just a short walk from Wimbledon train and tube station. A great opportunity for an investor or first time buyer looking for easy access to a choice of excellent local shopping, restaurants, theatres, bars and leisure facilities. This raised ground floor studio is situated in an impressive brick building and benefits from communal gardens to the rear of the property.

Further benefits include no onward chain and gas central heating.

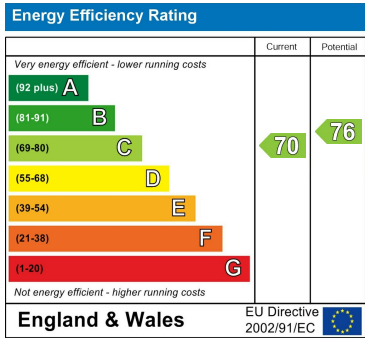
Service Charge - £1,600.00 PER ANNUM  
Ground Rent - £100

134 years left remaining on the lease.

238.00 sq ft



Council Tax Band  
**B**  
Energy Performance Graph



Call us on  
**020 8546 7771**  
**info@saxonkings.co.uk**  
**www.saxonkings.co.uk**

Agents Note: Whilst every care has been taken to prepare these particulars, they are for guidance purposes only. All measurements are approximate and are for general guidance purposes only and whilst every care has been taken to ensure their accuracy, they should not be relied upon and potential buyers are advised to recheck the measurements.

